

Next-Level AI Driven in a Compact Workstation

Powered by aiGeni

Altos BrainSphere™ GB10F10

A high-performance compact workstation engineered to accelerate AI workloads with seamless deployment, real-time monitoring, and secure on-premises computing.



NVIDIA Grace
Blackwell Superchip



128GB Unified
Memory



4TB NVME
Storage



Altos aiGeni AI
development tool



Built for Real-World AI Applications



Prototyping



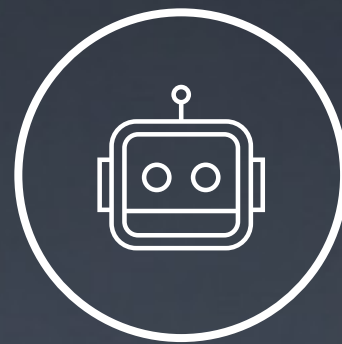
Fine-Tuning



Inference



Data Science



Robotics



Edge Computing

Altos aiGeni:

One-Click AI Development & Deployment Platform

Combining the desktop-class supercomputing power of the Altos BrainSphere™ GB10 F1 with Altos aiGeni intelligent development tools, it delivers AI solutions tailored to the most demanding needs.

Quick Start, Zero Barriers

Supports mainstream frameworks such as TensorFlow and PyTorch, with one-click environment setup so developers can focus on model innovation. Altos aiGeni enables rapid use of speech-to-text, text-to-image, and LLM fine-tuning services on ARM-based systems.

Automated Backup, Secure Data Protection

Automatically saves project results based on user-defined schedules, reducing data loss risks and safeguarding research progress.

Smart Monitoring, Full Performance Visibility

Built-in real-time dashboard displays CPU, GPU, and memory usage, optimizing resource allocation and prevent performance bottlenecks.

Efficient Collaboration, Faster Breakthroughs

Intuitive tools simplify workflows, enabling teams to focus on innovation and shorten the time from concept to deployment.

Perpetual Licensing Scheme

A perpetual licensing scheme is a one-time investment that grants long-term usage rights with zero subscription fees. It ensures predictable costs and better control over total cost of ownership, making it ideal for organizations seeking financial stability and long-term efficiency.

Specification

GPU	NVIDIA Grace Blackwell
CPU	20 core Arm, 10 Cortex-X925 + 10 Cortex-A725 Arm
CUDA® Cores	6,144
Tensor Core	5th Generation
RT Core	4th Generation
Tensor Performance	1 petaFLOP AI performance*
System Memory	128GB LPDDR5x, unified system memory
Memory Interface Bandwidth	256-bit 273 GB/s
Storage	4 TB NVME.M2 with self-encryption
USB	3 x USB 3.2 Gen 2x2 Type-C, 20Gbps, alternate mode (DisplayPort) 1 x USB 3.2 Gen 2x2 Type-C, with PD in (180W EPR PD3.1 SPEC)
Ethernet	1x RJ-45 connector 10 GbE
NIC	NVIDIA ConnectX®-7 NIC (200G x 2 QSFP)
Wi-Fi	Wi-Fi 7
Bluetooth	Bluetooth 5.4 with LE
Audio Output	HDMI multichannel audio output
Display Connector	1 x HDMI 2.1a
NVENC NVDEC	1 x 1 x
OS	NVIDIA DGX™ OS
Max Power Consumption	240W
System Dimensions	150 x 150 x 50 mm (1.13L)
System Weight	< 1.5 kg
AI Software	Altos aiGeni

*Theoretical FP4 PFLOPS using the sparsity feature.

Contact Us :

0822-4482-0009 | ain.telesales@acer.com | ain.commercial@acer.com



Acer Indonesia



@AcerID



@AcerID



AcerIndonesia